

# Manuals and Guides For DMD-T865

If you bought the **DMD-T865x** this page is for you.

We will provide all the information you need to assemble, operate and maintain your device.



## Information:

CE / ROHS / REACH / FCC

EMARK / UKCA / CE / IC

SUBTEL / GSMA / PTCRB

IP67 certification + MIL-STD-810G

GSMA, RCM

Additional Certification:

Hot and Cold Tested: IEC 60068-2-14:2009

-20C to 60C certified

Shock and Crash Tested: IEC 60068-2-27:2008

Pulse waveform: half sine wave;

Acceleration: 500m/s<sup>2</sup>

Pulse time: 6ms;

Test axis:  $\pm X$  axis,  $\pm Y$  axis,  $\pm Z$  axis, a total of 6 directions;

Vibration Tested: IEC 60068-2-64:2008

Frequencies: 10/20/30/180/2000

Power spectral density: 18/36/36/1/1

Acceleration Root Mean: 57.8

All axis up to 32 hours.

Latest Software Versions:

Android 14: DMD ROM 1.3.3

System Apps:

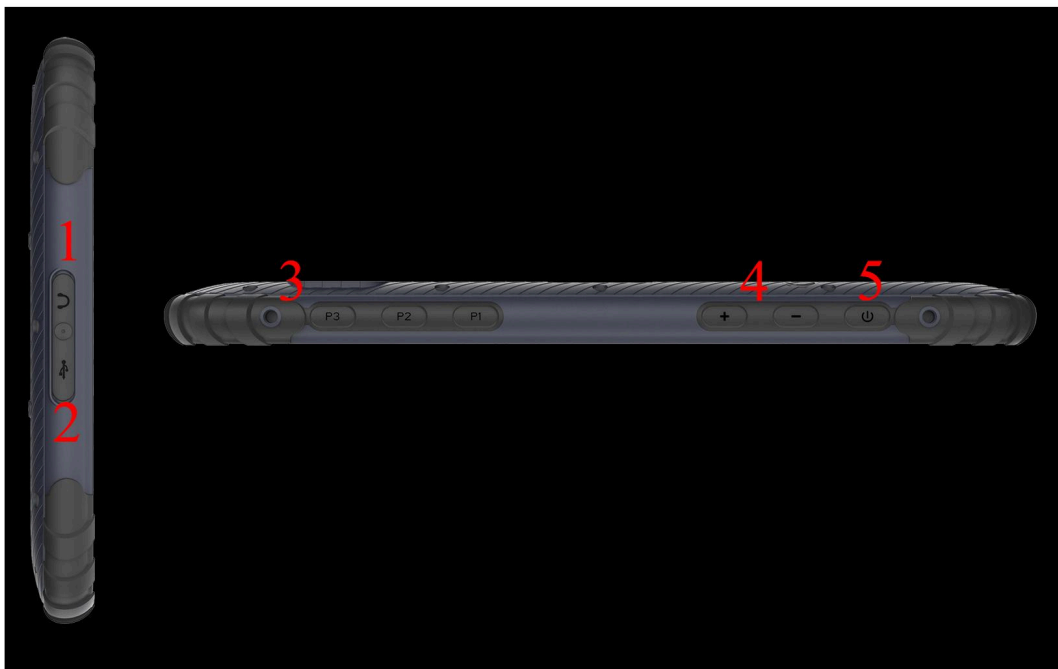
DMD2

Buttons

SOS

Auto-Off

## Interface:



**1** – Headphone Connection. Always make sure the cover is correctly closed when riding.

**2** – USB-C Connection – Will not work while the device is in the holder! Always make sure the cover is correctly closed when riding.

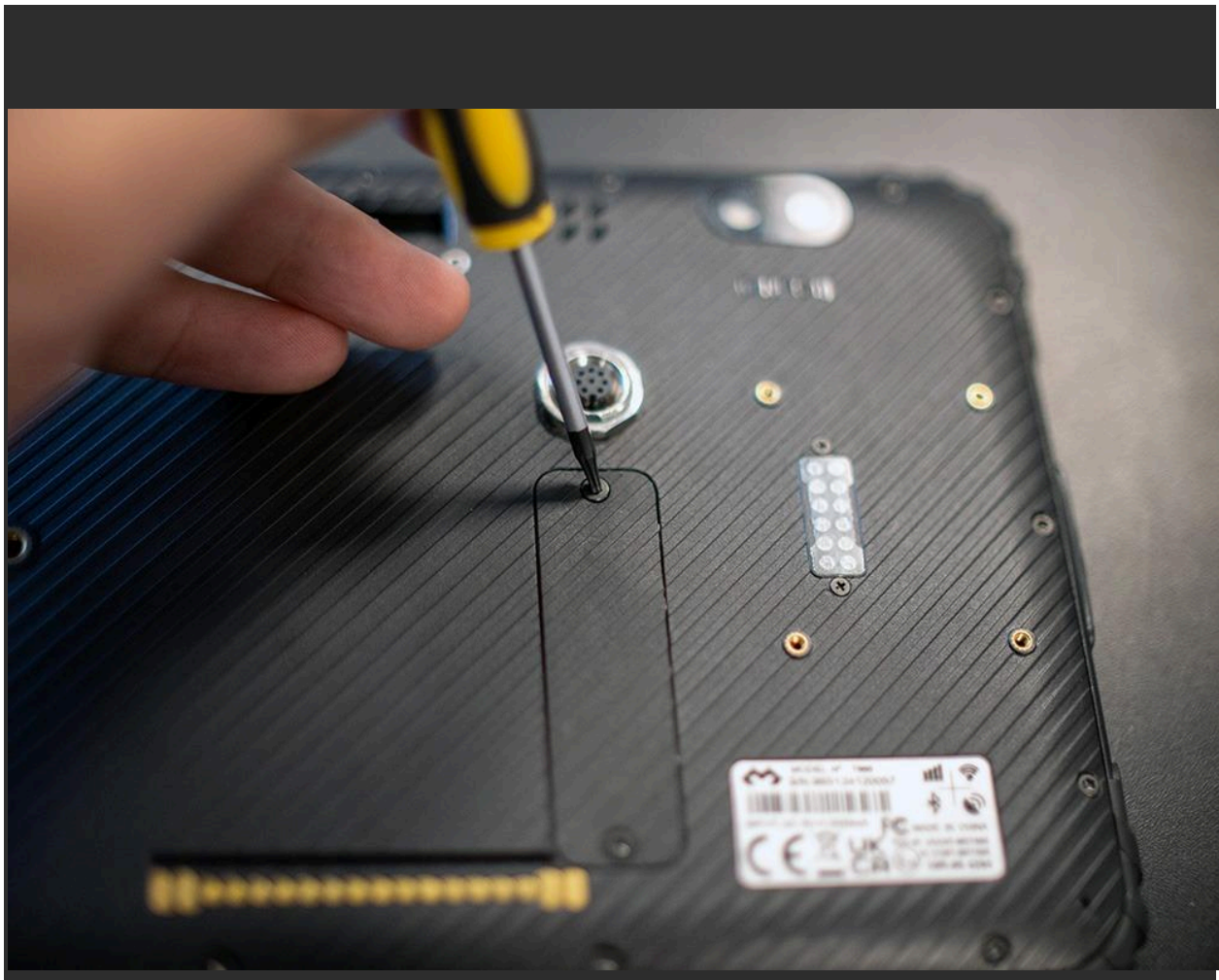
**3** – User configurable buttons – You can configure them with the included system app “Buttons”

**4** – Volume Control

**5** – Power Button

## **SIM Card / SD Card:**

**1** – Remove the two screws from the back cover with the included screw driver to access the card slots.



**2** – Insert up to two SIM cards and one SD Card. Check the description in the chassis and push it until you feel a “click”



**Harness:**





The DMD-T865 includes a holder and harness, bellow you can see the harness schematic and other information.

The only connection you need to do is to your motorcycle 12V, then the harness includes a splitter with 3 connectors:

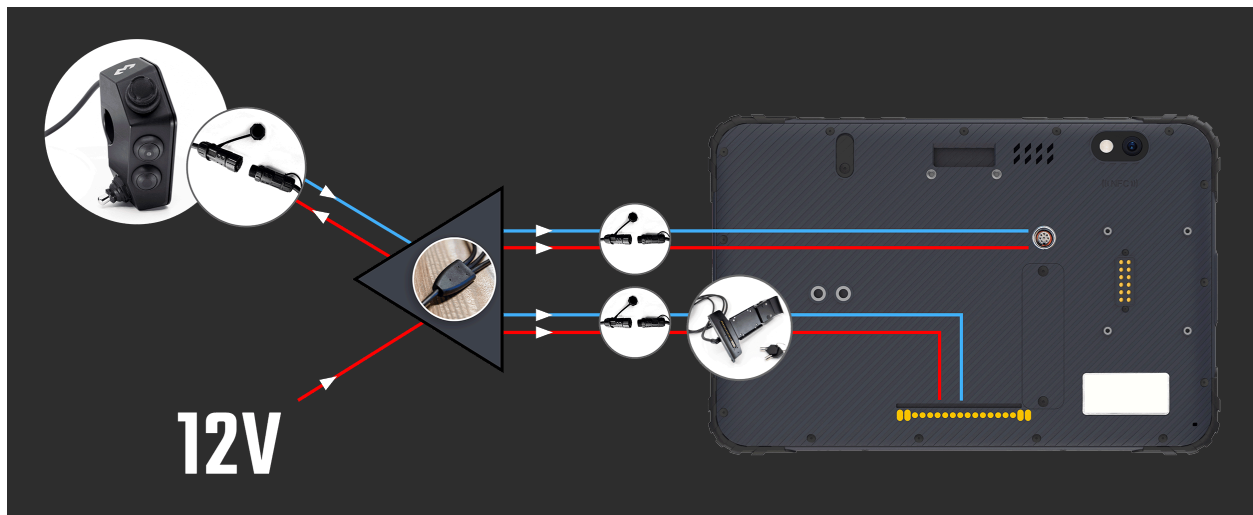
**One for holder**

**One to connect to the M12 connection in the back of the tablet (not mandatory)**

**One to connect to a DMD Remote controller (not mandatory)**

Regardless of how you connect to your tablet (by holder ping or by back M12 connector) both connections will also keep your remote controller powered and connected to the tablet.

**Note:** You can use both the holder connection and the M12 back connector connected at the same time!



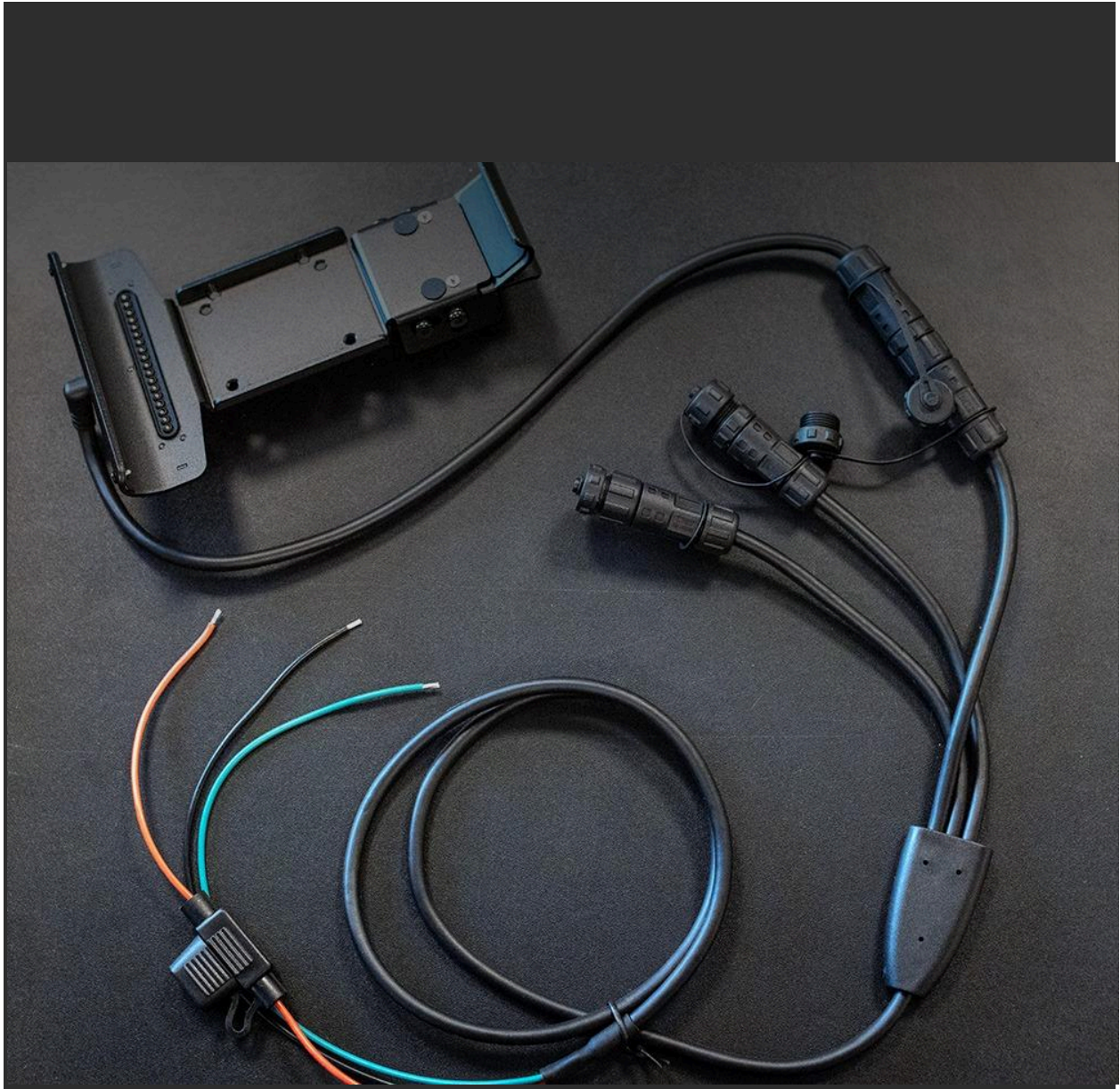
## Mounting:

The included charging holder needs to be secured to a base with AMPS bolt pattern, screws are provided but you should make sure you have a base with this hole pattern already installed in your motorcycle. For each installation/motorcycle model there are



usually plenty of AMPS pattern bases, if you have a navigation tower, chances are it already includes a base like this, if not, you need to search one for your motorcycle model / tower

Most GPS Mounts will work.



1 – Secure the holder to your motorcycle

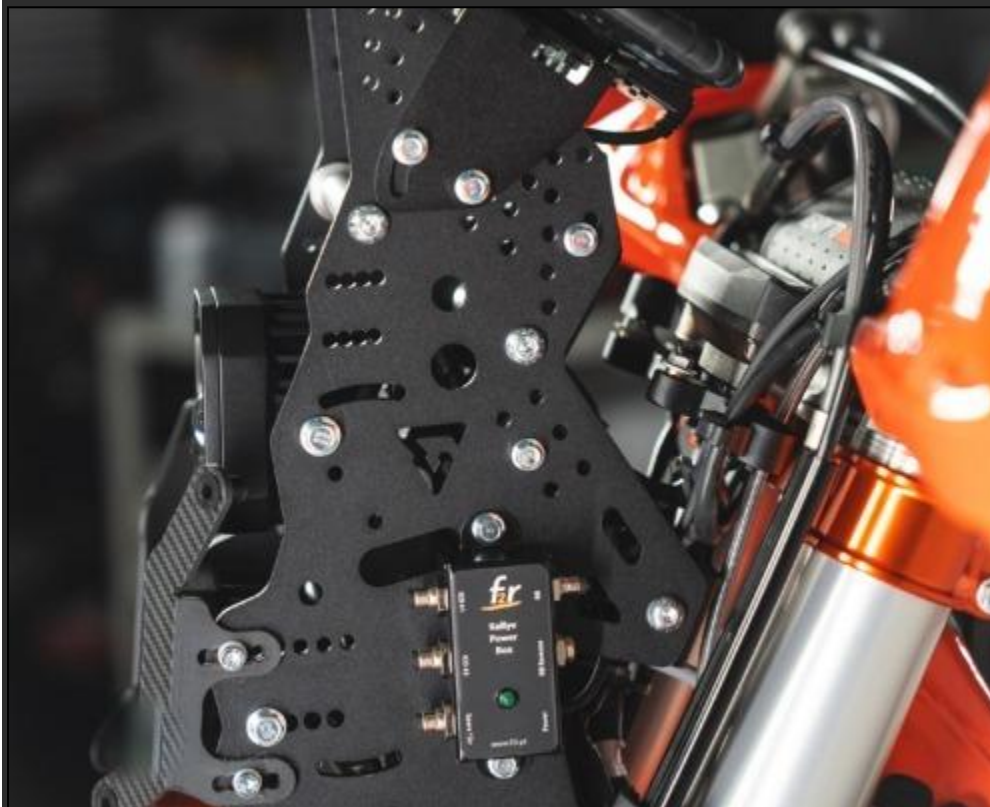
2 – We recommend you to connect power cables (black and red) to post ignition (so that power is interrupted when you turn off motorcycle), in this case you can ignore the green wire

3 – If you connect Red / Black wires pre-ignition (example: directly to battery) you can still use the green wire to trigger device shutdown (connect green wire post ignition) – configure green wire action in the Auto Off app – if you go for this setup we do not recommend leaving the tablet on the motorcycle after you finish your ride

Important: Always ride with the lock in the locked position!

Assembly examples from our users:







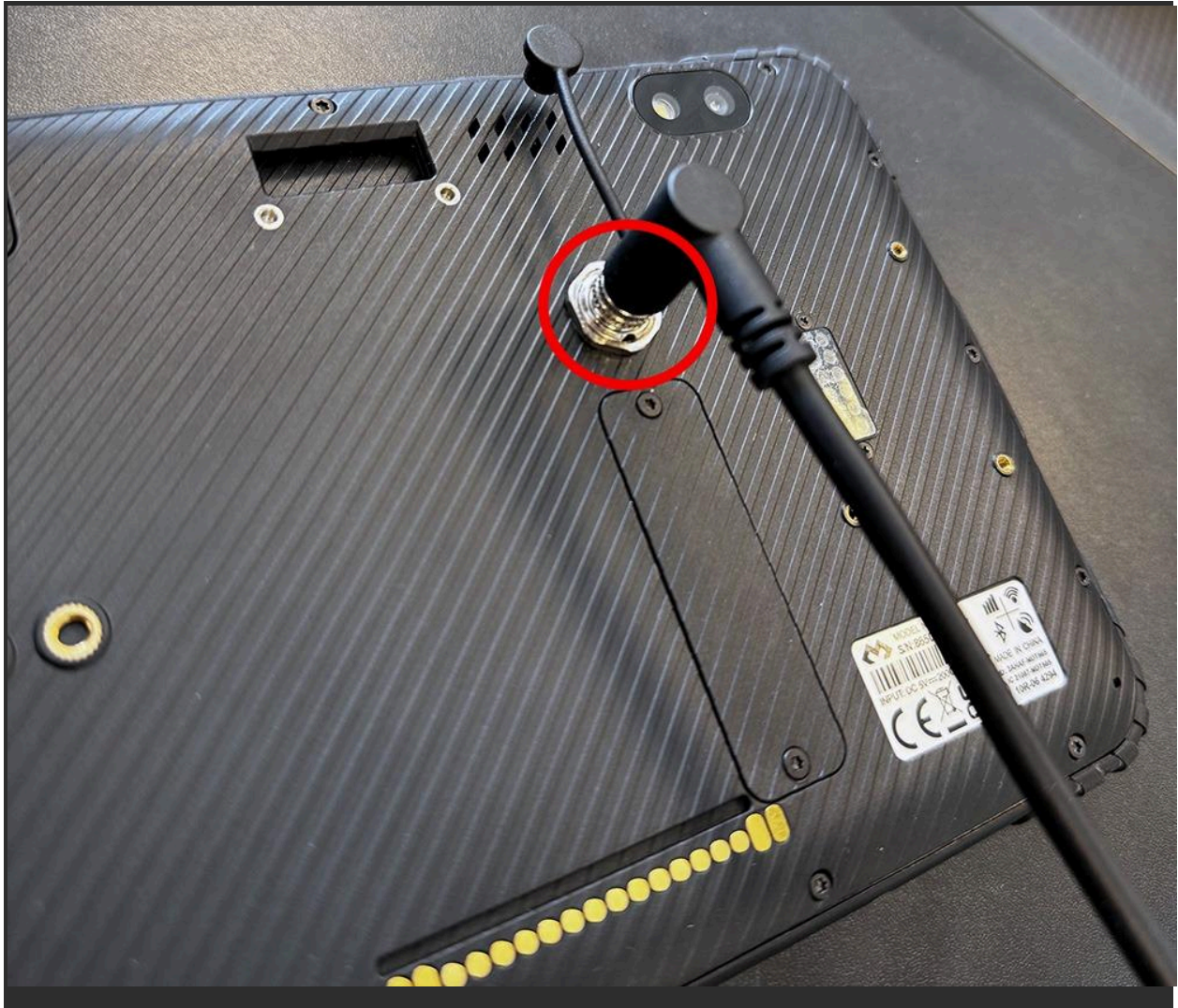








# M12 Connector Notice



Do NOT ROTATE this connector!

This connector can not be rotated, its position is fixed with the cable going down when connector. Attempting to rotate this connector to achieve other cable angles will result in damage not only to the connector internal cable but also possibly short-circuit the device board!

This connector is waterproof!

This connector is totally waterproof, it does not require any cover to achieve this. Leaving it exposed – without the cable connected – will not damage it and will not allow water inside. The stock included cap is not required.

## Lock Notice



#### Riding Without Tablet:

If you are riding without the tablet inserted in the holder, always lock the holder to avoid damage to the lock mechanism.

#### Always Locked:

The system is designed to be used in lock position, never ride with the tablet inserted with the lock unlocked.

#### Side Screw Alternative:

If you cannot reach the lock, alternatively, you can use one M4 screw on the side which will lock the tablet also (view image on the left).

## Alignment Check!

It is extremely important that you check if all 4 pins are aligned when inserting the tablet in the holder.



There are two holders in the tablet bottom and two in the tablet back, these should align with the pins on the holder. Make sure the tablet is being correctly inserted and that all pins align and enter the tablet holes.

If the holder gets damaged (bent) and the pins do not align with the holes in the tablet, please do not use it like that or it will cause damage to the device.



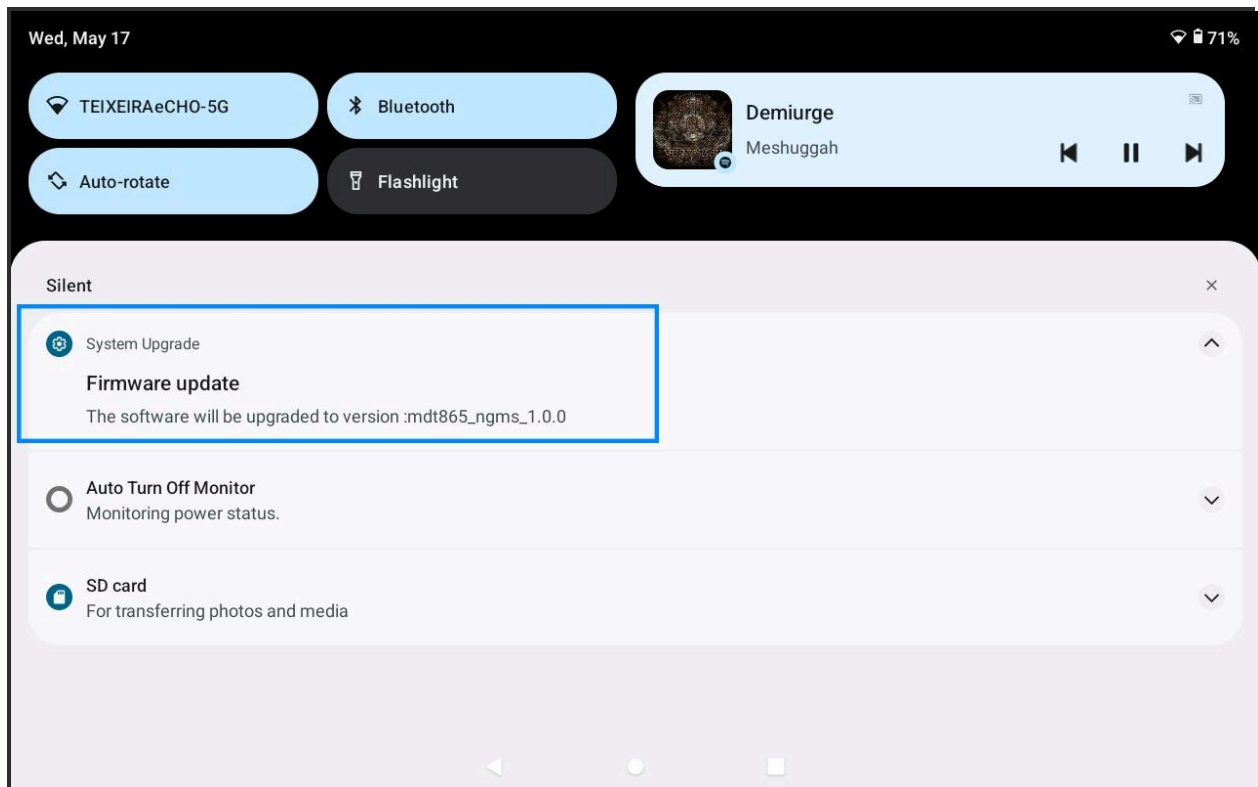
When attaching:

If you feel too much pressure is required please check if the pins are all aligned!

## Firmware Updates:

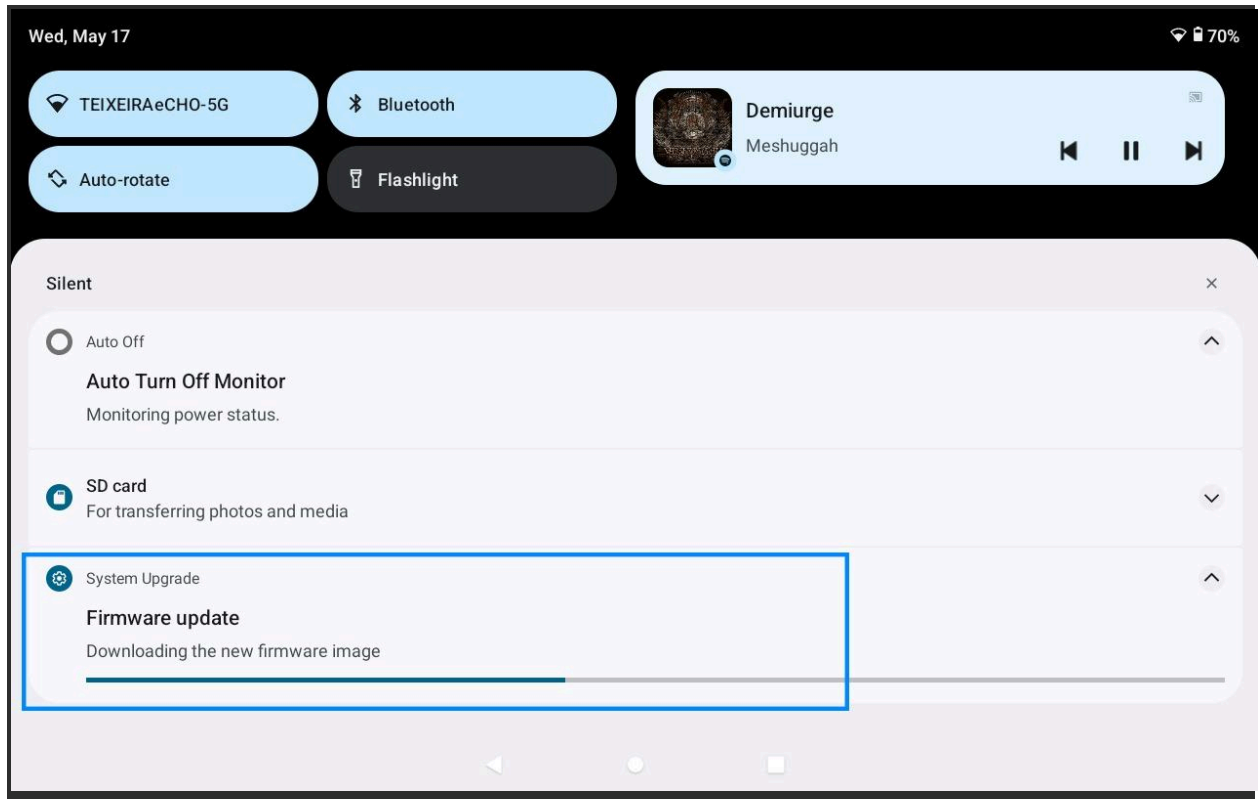
To make the firmware updates as simple as possible, every time we release an update you simply get a notification to update, just tap on the notification and it will start the download.

There are two types of firmware updates, complete updates which will move the firmware version up and include latest security updates, and partial updates which only update certain system apps and device settings, both use the same notification tap method.



After tapping the notification the download will start, you can track the progress in the notification. When the download finishes the tablet will restart and apply the updates.





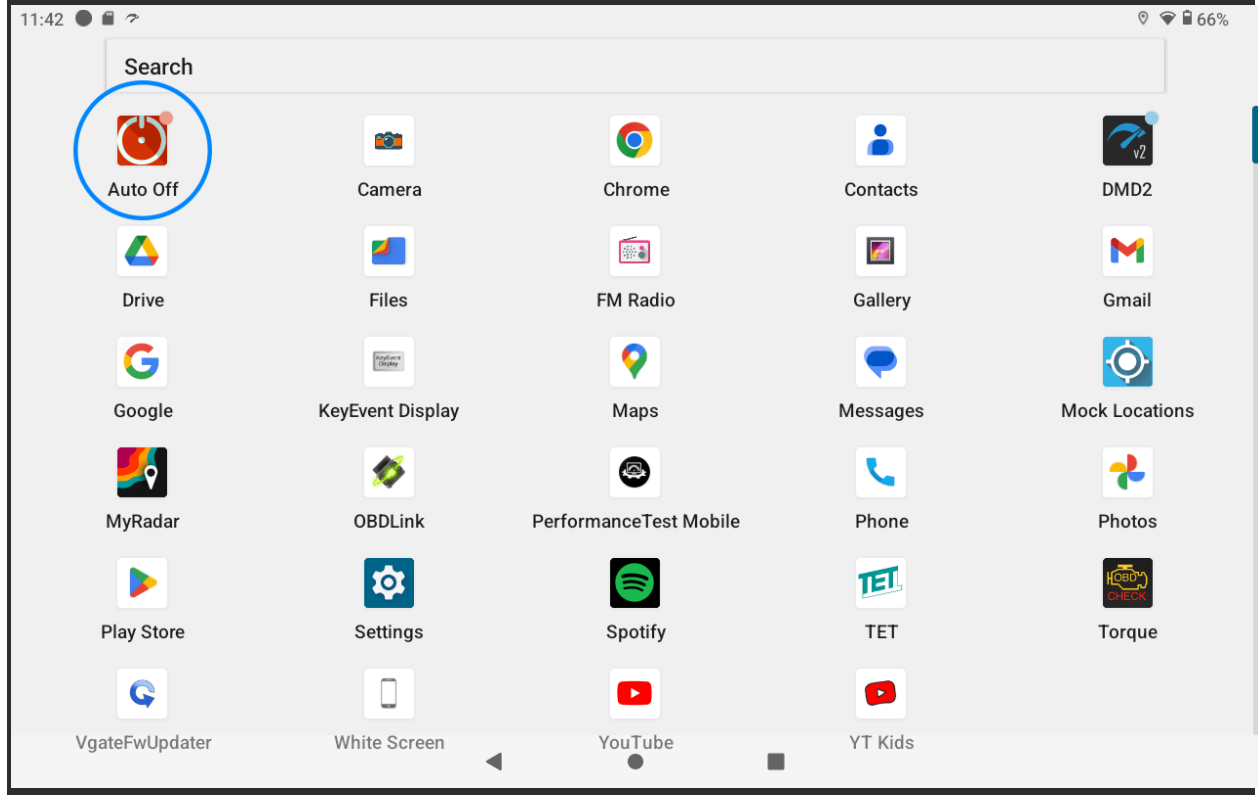
## Auto Turn On and Off:

**Auto Turn On** is activated by default on all DMD-T devices, this means that if your device is turned off it will turn on as soon as it starts charging.

**Auto Turn Off** is fully configurable, it can be enabled or not, it can do a full shutdown or just turn off screen, show a dialog with a counter or not.

To set up Auto Turn Off you can use the included “Auto Off” app.

## Auto Off app:



Auto Off options:

Enable Auto Off



Turn Off Action

Turn Off Screen

Show Message

Displays a message with a timer for the shutdown, includes button to shutdown now or cancel shutdown

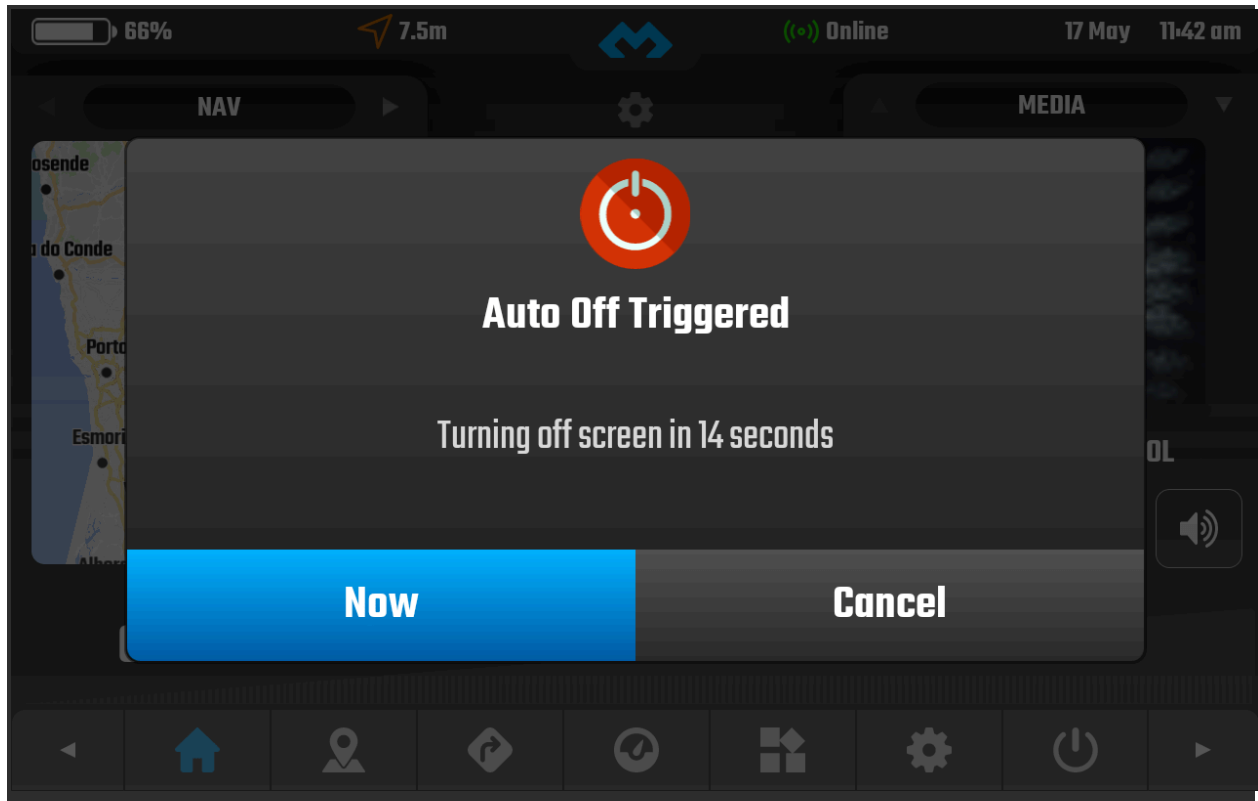


Message Timer

15 Seconds



Auto Off dialog:



## Default Home Launcher:

The default home launcher is the app which is shown when your device first starts or when you press the home button.

Some users like the tablet to behave more like a traditional Android device, with a **regular launcher where they can launch any app** including DMD2. Other users will use the tablet mostly on their motorcycles and want **DMD2 to be the default home app**.

## No Keyboard when using a controller:

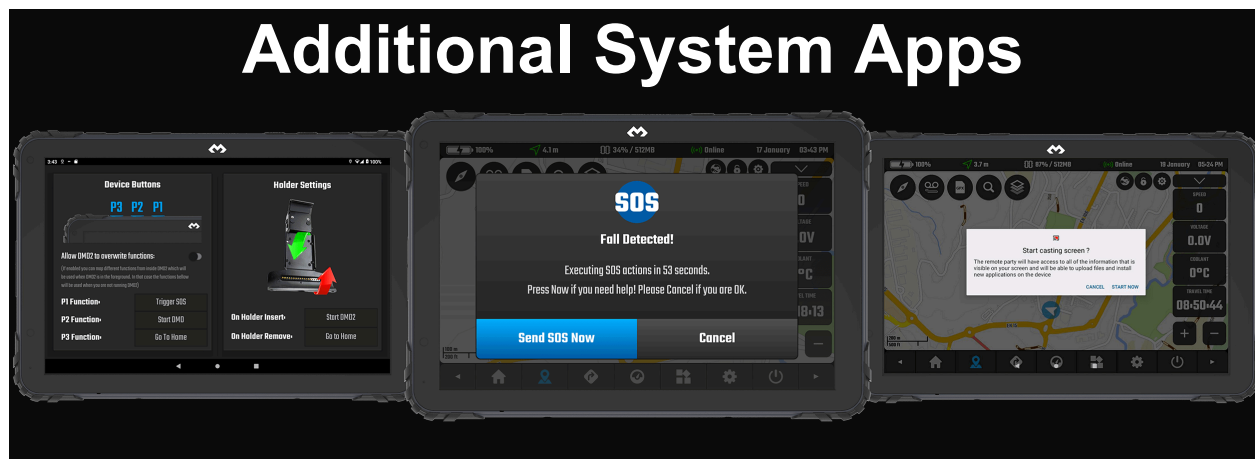


If after pairing a remote controller there is no software keyboard you just need to manually enable it.

If the on-screen keyboard is missing when you click on text input boxes, chances are you paired a remote controller and the system disabled the on-screen keyboard.

This setting can be changed at anytime and the setting will be remembered by the system (you only need to do it once).

This setting can also be found in **Android Settings > System > Languages & Input**



SOS

The SOS system will detect falls and trigger a user configurable SMS, with your location, that can be sent to up to two phone numbers. Can be used as an Alarm system too.



## Buttons

Configure the three device buttons with useful actions like SOS, toggle screen touch and open apps. Setup actions for when the device is inserted in the holder.



## Remote Session

Need assistance? Our support agents can request a remote session to check your device, this speeds up support allowing us to solve issues in record time.

